



### Trail Markers

Trail Markers have been placed on the trail to reassure walkers that they are on the right path.

### Safety on the Trail

- Take only photos and leave only footprints.
- Take adequate water for 60 minutes of gentle walking over a 3km distance.
- Take care and be sun smart. Use appropriate sun protection to avoid over exposure to sun and heat.
- Wear appropriate footwear for bushwalking. The trail is well defined but located within natural bushland; please beware of sharp objects such as tin and glass, stumps, rocks, branches and uneven ground.
- The trail is on land which once housed buildings of the No. 5 Base Ordnance Depot. The area is heritage listed; please do not remove any items from the bush.
- Vehicles and motorbikes are not permitted on the trail.
- The collection of firewood is not permitted in bushland surrounding the trail.
- Insects and reptiles inhabit both natural and historical debris within the woodland. Please do not disturb flora or fauna.
- Be mindful of Emergency Service & Nungarin Shire vehicles when crossing roads whilst using the trail;
- In case of emergency please dial 000 for ambulance, fire and police services

### Walk Details

**Trail Start:** Nungarin Heritage Machinery & Army Museum

**Distance:** 3 km [Short Cut 2 km]

**Walk Time:** 3 km = 1 hour / 2 km = 1.5 hours

**Grade:** Flat walk on a mostly firm sandy loam surface

**On-site Information:** Trail Markers & Interpretive Signage

**Facilities:** Two park benches for those who need a rest or would like to sit and enjoy the view

### Best Time to use the Trail

Throughout the seasons of the year the woodland is constantly changing represented in the bark, leaf colour and flowering of different perennial plants.

At all times of the year the trail has something to offer. Early morning and late afternoon walkers will see an abundance of birdlife, and from August to November the wildflowers bloom.

Some patches of the trail are clay so take care when wet and after rain. A bridge allows for crossing of the waterway

**For more information** or to report a problem on the trail please contact: during business hours, Mon-Fri:

Shire of Nungarin

Railway Street, Nungarin 6490

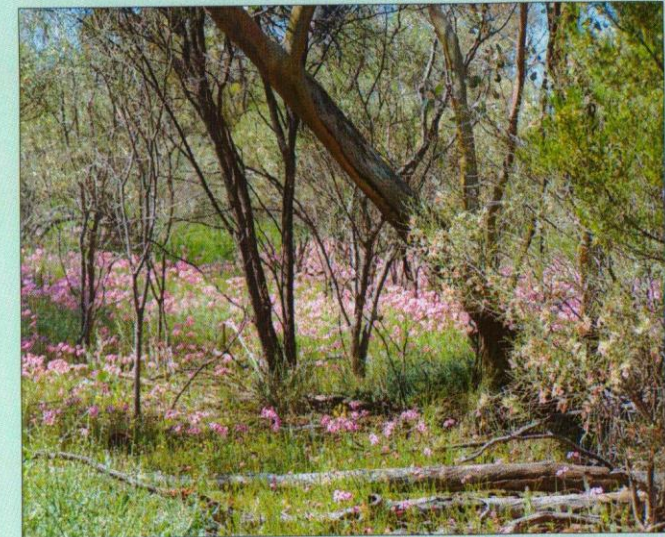
Phone: (08) 9046 5006

Fax: 9046 5007

E-mail: [nungshir@nungarin.wa.gov.au](mailto:nungshir@nungarin.wa.gov.au)



# Nungarin Nature and Heritage Trail





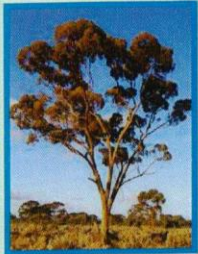
## Flora on the Walk Trail

The Nungarin Nature and Heritage Trail features many flora species endemic to the WA Wheatbelt.

### Salmon Gum

*Eucalyptus salmonophloia*

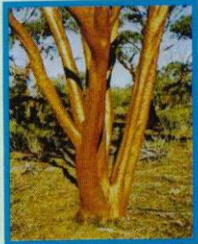
From winter to spring Salmon Gums have smooth, and white to silver grey bark, which becomes salmon pink to copper in summer and autumn. They have white flowers September to December



### Gimlet

*Eucalyptus salubris*

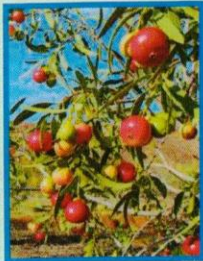
Gimlet have smooth, satiny, greenish grey or yellow to rich coppery bark. Trunks and stems are usually coarsely fluted. They have white flowers December to March



### Quandong

*Santalum acuminatum*

Shrubs grow 1-7m and are hemi-parasitic on roots of nitrogen fixing plants. They have green, white, red or brown flowers from Jan to April and from July to December. Fruit is produced after 4 years and ripens in late spring or summer



### Merrall's Wattle

*Acacia merrallii*

A dense, rounded spreading shrub that grow 0.3-2m. They have yellow flowers from August to October and dark brown to black seed pods that are often irregularly coiled. The pods semi-enclose orange seeds.

