



Pioneers' Pathway

The Wheatbelt Wander



Perth

Toodyay

Goomalling

Dowerin

Wyalkatchem

Trayning

Nungarin

Merredin

www.pioneerspathway.org.au

Perth										
84	Toodyay									
135	51	Goomalling								
159	75	24	Dowerin							
194	110	59	35	Wyalkatchem						
238	154	103	79	44	Traynning					
250	166	115	91	56	12	Kununoppin				
274	190	139	115	80	36	24	Nungarin			
314	230	179	155	120	76	64	40	Merredin		

Distances in kilometres



Pioneers' Pathway

The Pioneers' Pathway is a self-drive route that traverses the Wheatbelt following the well worn trail many prospectors once took on their way to the Yilgarn and Kalgoorlie Goldfields.

A suggested self drive itinerary is outlined from page 16 or plan your own Pioneering Pathway adventure using the information provided on available accommodation, attractions, festivals and facilities inside the back pages.

Toodyay	Page 2
Goomalling	Page 4
Dowerin	Page 6
Wyalkatchem	Page 8
Trayning	Page 10
Nungarin	Page 12
Merredin	Page 14
Suggested Itinerary	Page 16
Facilities	Page 18
Further Information	Page 21



Toodyay

On the route taken by early pioneers moving into Western Australia's interior Toodyay offered an encouraging sight with rich soils lining the valley floors, timber and water. Cairns left by John Forrest dot the Shire and a rich archaeological and architectural history provide visitors a glimpse of days gone by.

Founded by Ensign Dale in October 1831, the name Toodyay is derived from the Aboriginal word 'duigee' which means 'place of plenty'. The name relates to the richness and fertility of the area and the reliability of waters from the Avon River.

The original settlement was established on the Avon some five kilometres west of the present town. However that area flooded badly in the wet season, and in 1860 it was decided to move to the present town site. The town was then named "Newcastle". In 1911 the original name of Toodyay was adopted to avoid confusion with the town of Newcastle in NSW.

Attractions

While the streetscape of Stirling Terrace includes St Stephens Anglican Church (1862) and Connors Mill (1870), older buildings and ruins are present and can be visited by tourists willing to deviate from the main road. The Old Gaol Museum (1862) houses a collection of treasures from the Shire's Cultural Heritage Collection including convict artefacts. Nairn Cottage (1834) out at Mountain Park Estate can be viewed from the road, while visitors can walk around outside Syred's Cottage (1859), the original Bejoording Homestead. The colony's first resident botanist James Drummond resided at Hawthorden (1866) on Toodyay Bindi Bindi Road and while the house is a private residence his hedge still graces the roadside.



to Perth



Amazing Fact

Local Bushranger Moondyne Joe escaped from custody at least four times.



Toodyay

to Goomalling

Toodyay's historical interest is not limited to the pioneering era with the earthworks of a highly secret WWII post present in Pelham Reserve (we are still trying to find out what that was all about), Windmill Hill Cutting on the Toodyay-Northam Road, in its time the deepest railway cut in the southern hemisphere and Coorinja Winery on the Toodyay – Perth Road, with some of the oldest continuously used oak barrels in the state.

On top of this Toodyay offers a wide variety of accommodation types, shops, cafes and galleries, as well as the natural beauty of the Avon River and the Avon Valley National Park, to name only two of the many reserves within the Shire.

While the area is popular during the wildflower season, there are enough walks and wildlife to provide interest for the nature lover throughout the year. The Toodyay Visitor Centre can provide maps, advice and accommodation bookings, as well as books on the town's history and local produce.

The Moondyne Festival on the first Sunday in May is a fun family celebration of the state's bushranger heritage with street theatre and other forms of entertainment. It is followed by the Act, Belong, Commit Avon Descent/ Toodyay International Food Festival in August, the Toodyay Picnic Races in September, the Toodyay Show in October and the Toodyay Bush Poets Weekend in November. All this is in addition to a number of smaller events throughout the year.

Only 84 kilometres from the Perth CBD, Toodyay can be a quick day trip, an overnight stay or a stop along the way to Goomalling another 51 kms down the road and the next stop on the Pioneers Pathway.

Goomalling

Goomalling, located 132 km north of Perth and 48 km inland from both Toodyay and Northam, is the 'Hidden Jewel' of the Avon Region. With a population of approximately 1100, Goomalling is a progressive and friendly community waiting to welcome you.

Our community's commitment to preserving the built environment is evident to the visitor. We boast a variety of architecture from the found material buildings of Slater Homestead to the new 'tilt up' concrete construction of the Community Resource Centre. A walk around the town provides a snapshot of building styles over the decades of European Settlement of Australia.

Attractions

Rich in the history that saw Australia settled and thrive in the late 1800's and 1900's Goomalling is predominately a grain and sheep town. Prior to the proliferation of motorisation grain disposal points and community halls were generally only about 15 miles apart, Goomalling still has two smaller localities within the shire boundary Jennacubbine to the west and Konnongorring to the north. The Jennacubbine Tavern continues to provide the local community, regular visitors and tourists with great hospitality. Cold beer, conversation and the very popular 'End of the Road Steakhouse' are well worth the short detour off the Pioneer Pathway. Konnongorring is home to the Gabby Quoi Quoi Catchment Group. Information at the lookout details the revegetation work carried out by the group over the last twenty odd

years and provides a great vantage point to understand the scope of the work. Both communities have community halls, periodic events are held by the local communities and the halls are available for hire.

Slater Homestead, located 2.5 kilometers east of Goomalling and restored by the Shire of Goomalling, symbolizes the pioneering experience. The iconic homestead has been considered and entered into the State Register of Heritage Places, and is open Wednesday to Sunday from March to November. The homestead is the home of the Australian Creatures Gallery. Marvel at some stunning wildlife photographs that capture the diversity and uniqueness of Australia's fauna superbly. The heritage of the homestead contrasts with the wheat domes, a striking

to Toodyay



Amazing Fact

The Wayside Inn was the commencement of the pioneering route to the Yilgarn and Kalgoorlie Goldfields during the gold rush of the 1880's.



landmark upon entry to town. The domes, an innovative engineering feat built in 1994 are the only structure of its kind in the southern hemisphere.

The Goomalling Museum precinct provides a journey back in time with the refurbished one teacher school, and restored school bus. The school master's residence and a collection of early farm machinery complete the precinct. Pick up a copy of the Historic Town Walk brochure and enjoy a leisurely stroll around the streets of the town and delight in the murals and rustic art dotted here and there.

Nature enthusiasts will appreciate the picturesque surroundings at the Oak Park Nature Reserve, located 15 km from Goomalling town site, relax with a picnic or barbecue in the shaded undercover area or experience the natural flora and fauna along the walk trail. During the winter and spring months the Mortlock River Rest Stop provides plenty of opportunities for landscape or macro photography.



Dowerin

Green in winter, golden in summer, 156 kilometres north east of Perth, Dowerin has an array of attractions both natural and manmade providing an entertaining and interesting experience for the visitor. The first settlement for agriculture was in 1897 with the town established in 1906 once the railway line was extended from Goomalling. More than a century later, agriculture remains the dominant business of the district with grain growing and sheep production for meat and wool.

Attractions

A series of wells dating back 100 years offer an insight into the importance of the route via Dowerin to the Yilgarn Goldfields.

Visit the Museum to view furnishings and artefacts from the district complete with a shop in the back yard displaying items related to the businesses of the era.

Explore the natural environment by visiting the Tin Dog Creek Walk Trail for a great

introduction to the plants and birds of the Wheatbelt. Rusty, the Tin Dog, stands guard at the west entrance to town and was a project initiated by students at Dowerin District High School. Ample parking and picnic facilities are available at the information bay which further offers a connection to the main shopping precinct, public toilets and the Tin Dog Walk Trail.

Dowerin

Take a drive to the small town of Minnivale which was established in 1911. Minnivale was once a thriving little community with a co-op, baker, butcher, post office, bank, sports facilities, church and a state school. Much of the town is still intact although most buildings are now in private hands. A new history is emerging in Minnivale with the development of the Wheatbelt Heritage Rail Project which aims to reinvigorate Minnivale as a themed rail heritage town, based out of the former CBH Wheat Bin. Although in its early stages, work has commenced to transform the former Wheat Bin into a Heritage Rail Interpretative Centre.

After wandering in and out of the shops in the main street, grab some lunch and a sweet treat or two from the Bakery and head to Centenary Park. A lovely area to rest and enjoy a BBQ or a

picnic lunch with a good variety of play equipment to keep the kids amused and for the older ones, the Skate Park is next door.

Dowerin's premier event, the GWN7 Dowerin Machinery Field Days, are conducted over two days at the end of August each year and is the biggest rural event in Western Australia. This event continues to attract tens of thousands of people to the Wheatbelt and takes place annually within the heart of the town site.

Many flowering species of Wattle (Acacia), Melaleuca, Hakea and Grevillea are common throughout the Dowerin Shire. The Pink Pin-Cushion Hakea, and Grevillea petrophiloides or Pink Pokers and white-flowered Grevillea biformis, can be seen on many road verges

Amazing Fact

The Dowerin Machinery Field Days is the largest Field Day in WA. The site was previously one of the biggest motor race tracks in WA.

to Goomalling

to Wyalkatchem

Wyalkatchem

Welcome to Wylie you'll hear the locals say! The friendly country spirit is alive and well here at this 'strange name, beaut place' and easy two hour drive from Perth via Toodyay or Northam Wyalkatchem is east of Perth along the popular Pioneer Pathway and wheat belt way self-drive routes Wyalkatchem is a proud wheat belt town, winner of Australia's Tidiest Town in 2003.

Pastoralists were active in the district from the late 1850's and they may have been preceded by sandalwood cutters. Permanent settlement began in 1904 with throwing open of land for selection. The Yarragin Road at first a pastoralist's track, became the Goldfields Road after the discovery of the eastern goldfields and carried a

heavy volume of traffic to and from the diggings.

The district lays claim to being the cradle of bulk handling because of the pioneering construction of bulk grain facilities in 1931. Wyalkatchem is now a strategic receival point for Cooperative Bulk Handling and is a far cry from those modest yet ground breaking facilities of 1931.

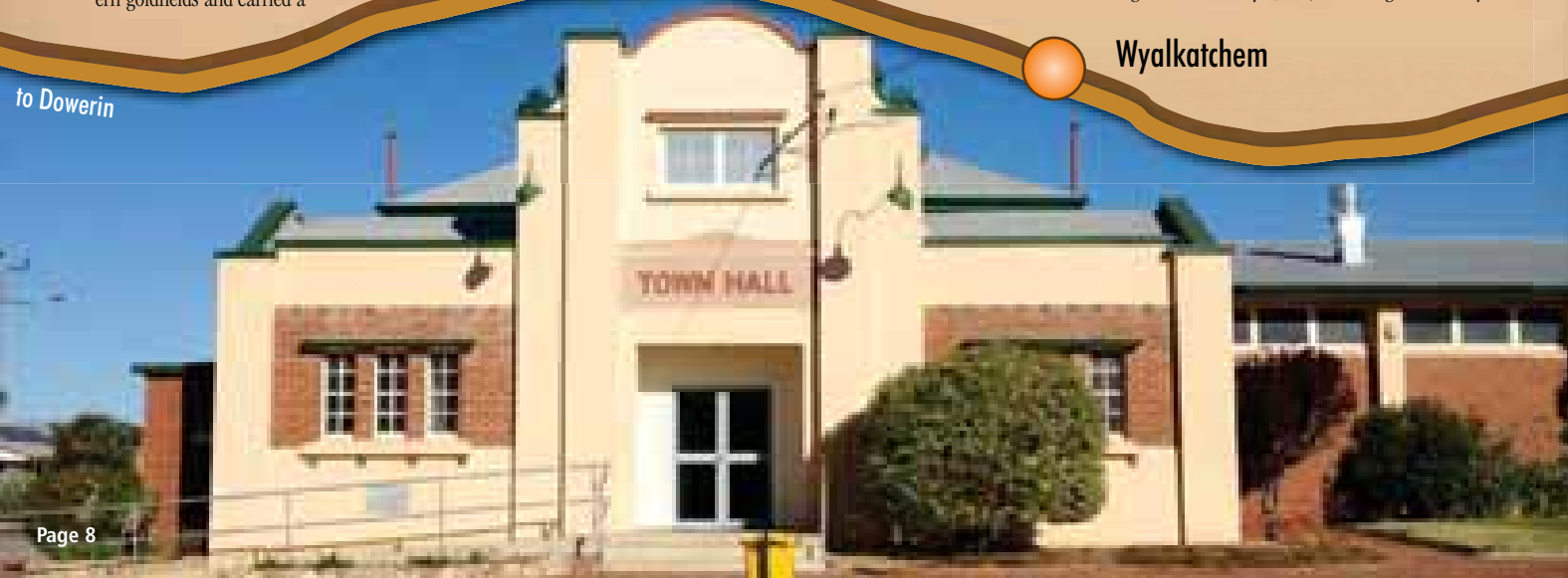
The Town features a main street that is an attraction in its self with its blend of historic buildings, murals and landscaping. One of the wheat bins from the 1930's is preserved in the Town and houses a large and varied collection of agriculture, transport and railway equip-

ment as part of the Wyalkatchem Museum The Shire has several reserves of remnant vegetation that contain a wide range of species and are particularly attractive in the wildflower season. Korrellocking Reserve is 7 kilometres east of Town on your way to Trayning. The Reserve covers 259 hectares of pristine bushland with some great examples with Salmon Gums and Gimlets. It's a picturesque picnic spot especially during wildflower season with tables, toilets interpretative signage, marked walk trail and pioneer well. Some 44 bird species have been recorded at the reserve.

While in Wylie after you visit the museum you can do the Heritage Town Walk. The Town boasts many fine historical buildings from the early 1900s, including the railway

Wyalkatchem

to Dowerin



Amazing Fact

Wyalkatchem CBH Museum has on display the extremely rare "Waterloo Boy" - forerunner of the John Deere tractors of today.

to Trayning

wildflowers and orchids.

Cowcowing Lake is 26 kilometres to the north of town and covers an area of 15,000 hectares. On rare occasions when the lake is full locals use it to water ski

On the outskirts of Town on the South side of the Goldfields road is the Wyalkatchem well It is unique with its rectangular shaped granite walls, constructed by John Haywood for the Toodyay Roads Board in 1881 and later utilised as a water source for early steam locomotives.

station Wyalkatchem Town Hall and the School Masters House. A heritage walk leaflet is available at the visitors centre.

Nature lovers are well catered for with the Walk - A - Wyal tracks in and around Wyalkatchem town site.

A 30 minute drive south of town on the Tammin road, Yorkrakine Rock is a spectacular granite outcrop rising 342 meters and covering an area of some 160 Hectares, making it an ideal spot for picnics (toilets available). During spring the reserve comes alive with stunning



Trayning

Natural granite outcrops, native flora and fauna, woodlands and panoramas of wildflowers in season are all found in the district 235kms from Perth and 70kms from Merredin.

The area was named after 'Trayning Well', derived from two aboriginal names 'Durri-iring' or 'Duranning'. The words mean 'to crawl', and 'a camping place' and became known as 'snake crawling in the grass near campsite'. The gold rush of the 1880's saw substantial increases in population as people took up farming leases or serviced those travelling through the district to the gold fields. Social life flourished and the first country trotting club in the state was registered in 1923.

The original grandstand can still be seen in Trayning.

The Shire has three townships each 11kms apart.

Yelbeni

Don't miss the general store, located in the original Hall, 50m off the main road and our small Centenary Museum. The key is available at the store.

Trayning

The largest of the three towns. Feel free to wander around town and view the mature tree library. Within the vicinity of the R V Friendly caravan park are the towns' beautifully lawned BBQ area with playground, and lovely Aquatic Centre with a well equipped gym.

Kununoppin

is the town amongst the tall salmon gum trees. Drive around to discover the tin sculptures. Kununoppin has a rural hospital servicing surrounding districts.

Attractions

Attractions have limited or no amenities so be prepared and take everything for your picnic.

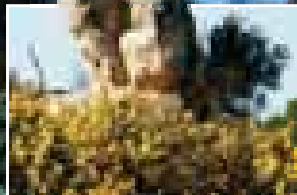
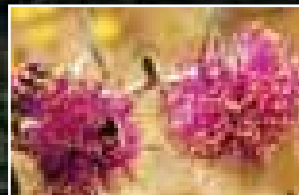
Billyacatting means "Hill" and is located 27kms east of Trayning; the site was first recorded by HS King in 1889. The reserve contains a wealth of early pioneer history including well

to Wyalkatchem

Yelbeni

Trayning

Kununoppin



Whiteman's Rock

Amazing Fact

The wheat silos which dominate the town of Trayning were built in 1955/56. They are one of only three silos of this design in Western Australia. Watch out for silos along the Pathway and you will see the many differing designs.



and the nearby National Trust homestead of Mangowine. These rock outcrops were traditionally used by the Njaki Njaki people for food and water as well as having a strong spiritual significance.

A 2.4km Hill Top walk trail takes explorers on a marked trail to the highest point with a trig beacon located at 410m above sea level. Billyacatting is surrounded by spectacular views and includes 'meet the plants' trail side signs along the way. Allow about two hours for the whole walk. Alternatively for a more leisurely stroll there is a 1.1km marked Woodland Walk Trail through the vegetation at the rock base which also has trailside signs about animals that live in these shrublands and woodlands. Look for yonga (kangaroo), weitj (emu), kaarda (goanna) and

nyingarn (echidna).

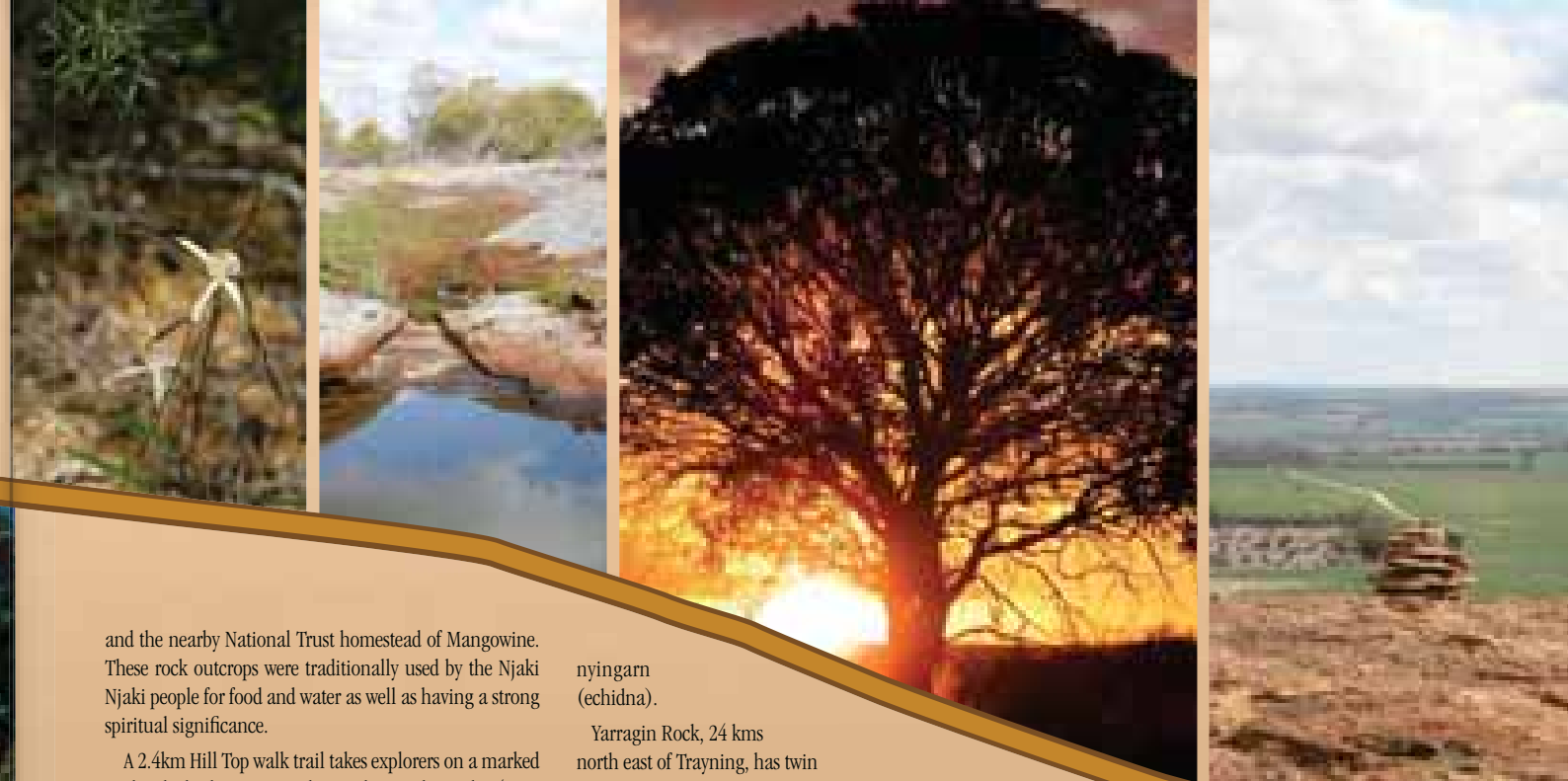
Yarragin Rock, 24 kms north east of Trayning, has twin monoliths rising from a flat granite outcrop, visible from a great distance.

Whiteman's Rock, a massive finger-like projection of white quartz is located on Moujakine Road, north east of Trayning. Gold was discovered here in 1887.

Trayning Gnamma holes (rock pools formed in granite that collect water) are situated 18kms north of Trayning. These holes attract birds, wildlife and wildflowers.

Typically 'sundews' occur in these areas, a bizarre plant that digests insects with a short walk trail and informative signage along the way.

to Nungarin



Nungarin

Nungarin is a small wheatbelt town (one of the least populated shires in Australia!), but what we lack in size we make up for in the important things. We excel in good old-fashioned country hospitality, there is ample free parking, and our toilets are always open!

We have lots of interesting heritage buildings, including the earliest homestead in the district, the largest timber ex-army storage shed in the southern hemisphere, the quaintest road board office - hardly bigger than the average bathroom - but considered so desirable that at one time it was defended at gun point!

Drive out to historic Mangowine for an absorbing guided tour of the

homestead which was built by the pioneering Adams family in 1875. The building has been restored by the National Trust and is now leased by the Nungarin Shire. Mangowine is RV friendly, and we welcome campers and caravanners. A night spent under the clear open starlight sky is an experience to be cherished for a lifetime. There is a resident caretaker and the property is open every day except Wednesday.

Stroll down to the museum where the military enthusiast will be captivated by Bill's stories about the vital role that Nungarin played in the defence of Australia during WWII. The huge army ordnance depot was built at a cost of

10 million pounds and considered one of the largest military storage facilities in W.A. The depot was closed down after the war, but one of the huge workshops still remains and houses the Nungarin Heritage Machinery & Army Museum which boasts a wide range of military machinery and agricultural equipment, including an impressive Tenth Light Horse display. On the outskirts of town you will see massive brick walls looming incongruously from surrounding farmland. The walls are all that remain of 5 huge army storehouses.

Accommodation and camping is available at McCorry's Old Hotel situated to the north of the townsite. This magnificent old stone building was erected by agricultural pioneer, Con McCorry, in 1912.

Wander around the famous Nungarin Wheatbelt Markets which are held on the first Sunday of each month between March and December, and experience the popular Mangowine open-air concert which is held annually to coincide with the October Markets and regularly attracts hundreds of people.

Take a leisurely wander on one of our self-guided heritage walks and revel in our local stories. How many country towns can claim such notorious local characters as early outlaws "Big Jack" Morgan and "Ginger" Hamilton, indicted murderer "Shark-arm Jackson", and the infamous Anglican Minister and bigamist, the Rev George Little who later took to stage and screen in such epics as "Jedda" and "The Lawsons"?

Explore the district on a scripted self-drive tour, and why not include a picnic lunch and scramble over the awesome granite rocks at Danberrin, Talgomine or Eaglestone.

Amazing Fact

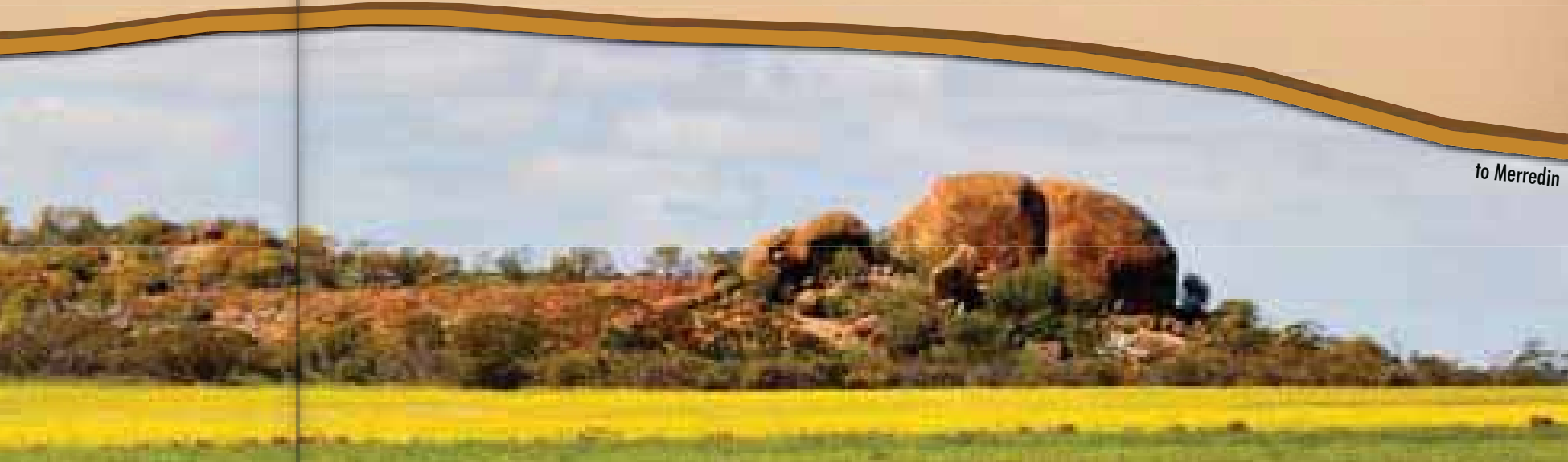
The notorious murderer, "Shark Arm Jackson", once operated a hamburger shop in Nungarin.

The wildflowers in Spring are simply breathtaking.

Sporting facilities in Nungarin are excellent and include grassed tennis courts, competition standard bowling greens, golf course, swimming pool and skateboard park.

Nungarin

to Merredin



Merredin

Merredin, with a population of 3,282 people is the largest regional centre in the Central Wheatbelt. In 1836 Surveyor General J.S. Roe described the region as arid and inhospitable. This did not deter the sandalwood cutters and early prospectors. After the water finding expedition by Charles Hunt in the 1860's, based on the catchments of granite rocks like Merredin Peak, the area began to open up. The gold rush of the 1890's and the coming of the railway and water pipeline to service the growing city of Kalgoorlie led to the development of the town, which is sustained today by dry land agriculture. Around 40 percent of the states

wheat is grown within a 100 kilometre radius of the town. The town's name is derived from the Aboriginal word "merrit-in", the place of the merri tree, a eucalypt used to make spears.

Attractions

Cummins Theatre

This heritage listed building was relocated from Coolgardie in 1927 by local brewer James Cummins. Mr Cummins purchased the Tivoli Theatre which had been built in Coolgardie in 1897 and had it dismantled and sent in pieces to Merredin by train. Cummins Theatre, renamed in honour of its founder,

opened to the public on the 10th October, 1928. Today it holds regular touring productions, theatrical and Musical performances. Visit www.cumminstheatre.com.au to find out about upcoming performances.

Merredin Railway Museum & Military Museum

Occupying the old railway station, the Merredin Railway Museum has an extensive display of railway memorabilia and social history. Wander among massive steam engines and rolling stock or climb the signal tower for a view and insight into the amount of signal leavers necessary to operate this once major rail hub. The Military Museum con-

tains a fine collection of memorabilia, uniform, vehicles and equipment, some restored to working order relating to all conflicts from WW1 onwards.

Merredin Peak and Railway Dam

Surrounded by native bushland this area is perfect for bushwalking or climbing the rock along the interpretive trail, rewarding you with magnificent views over Merredin and the surrounding countryside. Interpretive signage tells the story of the engineering techniques of building the stone contour wall, rock channel and railway dam in 1893. Adjacent to the Peak is the World War II remains of the 2/1 Australian General Hospital. A drive around the site

explains the history of the construction and reason for this inland hospital.

Totadgin Conservation Park

Located 14 kilometres south of Merredin on the Bruce Rock Road. Take the interpretative walk trail to view the mini wave rock and wildflowers in season. Enjoy a picnic in beautiful natural bush surroundings.

Pioneer Park

A large bronze statue of an early settler with his Clydesdale horse and a dog from pioneering days gone by. A great place to unwind, have a picnic and get an insight into the history of the regions farming and social community.

Wind Farm

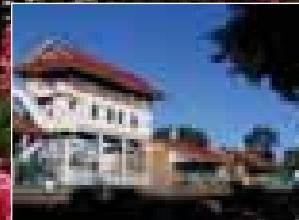
Located 25 kilometres south east of Merredin the Collgar Wind Farm covers 18,000 hectares and contains 111 turbines which generate enough power to supply 125,000 homes. It is the largest single stage wind farm in the southern hemisphere to date.

Amazing Fact

Did you know that the granite rock that makes up Merredin Peak is 2,500 million years old? So take a walk into the past up the Peak.

Merredin

to Nungarin



SUGGESTED ITINERARY

To explore the Wheatbelt along the Pioneers' Pathway

DAY 1 Midland – Toodyay - Overnight Goomalling

Head up the Toodyay Road from Midland, stopping in Toodyay to enjoy its historic streetscape and the many attractions the Visitors Centre can direct you to.

Be sure to visit Connor's Mill and the Old Newcastle Gaol Museum or if the river is up bring along a canoe and practice for the Avon Descent before continuing along the Pioneers Pathway to Goomalling.

Along the Goomalling Rd you will pass The Range homestead before continuing out along the road to cross the Avon River's tributary, the Mortlock River, about 10km south of Goomalling. Stop over at the rest area and explore the bush reserve. It has colourful wildflowers in spring. Goomalling 132 kms east of Perth is an ideal setting for your first night.

Adjacent to the caravan park is the town's school house museum – well worth a visit.

Take a stroll down the main street for a coffee and browse in the gift shops. The recently restored Slater Homestead is open Wednesday to Sunday from March to November, or by appointment. Light refreshments are available and the Homestead is home to the Australian Creatures Gallery.

DAY 2 Goomalling – Dowerin - Overnight Wyalkatchem

By mid morning you could be approaching Dowerin. The Tin Dog sculpture welcomes you to town. Consider a walk along the Tin Dog Walk trail and gain an insight into the flora and bird life of the Wheatbelt. The short route is an easy 1.8kms long and takes about 45 minutes.

The Dowerin Visitor Centre located in the main street will point you in the right direction for the 1930's house museum, Namalcatchem nature reserve and well, and other sights in the area that you can take in on the way to an overnight stop at Wyalkatchem.

DAY 3

Wyalkatchem – Yelbeni – Trayning – Kununoppin – Overnight Nungarin

After your overnight stay at “Wylie”, The Cradle of Bulk Handling, take time to explore the town and its murals. Have a morning tea or lunch and visit the Agricultural Museum housed in a 1936 wheatbin.

Take the old Goldfields Road through the Nature Reserve and turn into Korrelocking Reserve before carrying on to Yelbeni on the main road.

Travelling on to Nungarin you pass Yelbeni with its farm machinery display. At Trayning the “tree library” is a unique concept. You may wish to spend an extra night at the Trayning caravan park and explore Billyacatting Nature Reserve north of the town.

And don't just drive past Kununoppin before your overnight stop in Nungarin. Have a meander around the streets of the town set in a salmon gum woodland. You will chance upon delightful tin sculptures of pioneer life. Can you find the swaggy and his bicycle?

DAY 4

Nungarin - Overnight Merredin

Take the whole day to explore the Nungarin district. Market day is first Sunday of the month (March to December). Check out the Heritage and Military Museum. The Post Office Information Centre has heritage trail walk and drive tour guides of the district and town.

Eaglestone Hill not far from Nungarin is an enjoyable picnic spot. A great granite rock is poised over a sparkling salt lake. Or take an excursion and visit the National Trust homestead of Mangowine some 14 kms from the town to gain an insight into the life of the first pioneers (closed Wednesdays). Why not stay over and do both!

Arrive in Merredin and visit the Central Wheatbelt Visitors Centre for a town map, places to eat guide and some recommended walk and drive trails. Book into your accommodation and wander down the vibrant shopping strip of Barrack Street. Have a coffee & cake at one of the cafés and check out what's on at Cummins Theatre and plan where to dine out at one of several restaurant choices.

DAY 5 plus

Overnight Merredin

Take an early walk on the rock and bush trails at Merredin Peak and Railway Dam or drive around the remains of the WW II Australian General Army Hospital interpretive sites. A visit to the Railway and Military Museums and other military sites around Merredin is a must for history buffs. Enjoy a short drive east 20km along the highway to Burracoppin to see the Rabbit Proof Fence and then on to the first stage of the Collgar Wind farm to get a view of 111 turbines along Bulls Head Road south of the highway. Head south 14km on the Bruce Rock Road to see the Totadgin Conservation Park and historic Hunts Well, walk trails and a mini wave rock.

The following websites offer further information on this delightful area of Western Australia.

www.pioneerspathway.org.au
www.wheatbelttourism.com
www.driveWA.com



Any time is a great time to explore the Wheatbelt along the Pioneers' Pathway.

In Autumn the magnificent eucalypts are shedding their bark and exposing shining new trunks. Winter sees the wattles start to bloom and spring time brings out the wildflowers and everlastings.

Enjoy the crisp mornings and views across the open paddocks. Explore wonderful nature reserves, granite outcrops, salt lakes and heritage sites.

The sample itinerary offered here is just one way of enjoying the Pioneer Pathway. By all means linger longer at each delightful small town. You will be most welcome.

CAFÉ & RESTAURANTS

Toodyay - Alicia's Winery (Fri - Sun)	Nerramine Drive, Julimar	(08) 9574 5458
The Cola Café Restaurant & Museum	Stirling Terrace, Toodyay	(08) 9574 4407
Freemasons Hotel	Stirling Terrace, Toodyay	(08) 9574 2201
Maggie Bee Restaurant (Thurs – Sun)	Stirling Terrace, Toodyay	(08) 9574 2700
Toodyay Bakery	Stirling Terrace, Toodyay	(08) 9574 2617
Victoria Hotel	Stirling Terrace, Toodyay	(08) 9574 2206
Vince's Restaurant & Pizza Bar (Dinner)	Stirling Tce, Toodyay	(08) 9574 5544
Wendouree Tearooms	Stirling Tce, Toodyay	(08) 9574 2246
Jennacubbine Tavern	Collins St, Jennacubbine	(08) 9623 2273
Goomalling Tavern	Railway Tce, Goomalling	(08) 9629 1110
BP Roadhouse	Main Street, Goomalling	(08) 9629 1245
Go Café	Railway Tce, Goomalling	(08) 9629 1600
Caltex Goomalling	Throssell Street, Goomalling	(08) 9629 1550
Slater Homestead	Merredin Rd, Goomalling	0400 495 173
Dowerin Bakery	Stewart Street, Dowerin	(08) 9631 1031
Dowerin Roadhouse & Caratel Park	12 Goldfields Rd, Dowerin	(08) 9631 1135
Commercial Hotel	4 Stewart St, Dowerin	(08) 9631 1206
Ezi-way Foods	Railway Tce, Wyalkatchem	(08) 9681 1261
Wyalkatchem Hotel	Railway Tce, Wyalkatchem	(08) 9681 1210
Wyalkatchem Roadhouse	Mitchell St, Wyalkatchem	(08) 9681 1310
Wylie News & Gifts	Cafe Railway Tce	(08) 6102 3784
Trakshak Railway Station	Trayning	0418 959 016
Nungarin, McCorry's Hotel	McCorry Rd, Nungarin	(08) 9046 5187
Nungarin, 'The Store'	Railway Ave, Nungarin	(08) 9046 5003
Trayning Hotel/Motel	Railway St, Trayning	(08) 9683 1005
Frankie's Diner	Railway St, Trayning	(08) 9683 1091
BP Travel Stop	Great Eastern Hwy, Merredin	(08) 9041 1620
Café 56	Barrack St, Merredin	(08) 9041 5000
Chicken Treat	Great Eastern Hwy, Merredin	(08) 9041 1530
Commercial Hotel	Barrack St, Merredin	(08) 9041 4435
Denzils at the Olympic	Great Eastern Highway	(08) 9041 1588
Eagle Boys Pizza	Bates Street, Merredin	(08) 9041 1674
Olive Grove Café Restaurant	Barrack St, Merredin	(08) 9041 1713
Merredin French Hot Bread	Barrack St, Merredin	(08) 9041 3709
Merredin Motel & Gumtree Restaurant	10 Gamenya Ave, Merredin	(08) 9041 1886
Merredin Palace Chinese Restaurant	Mitchell St, Merredin	(08) 9041 2855
Northside Tavern	Bates St, Merredin	(08) 9041 1635
Shell Roadhouse	Great Eastern Hwy, Merredin	(08) 9041 1982
Subway	Barrack St, Merredin	(08) 9041 4607

SERVICES

Visitor Centres

Toodyay Visitor Centre	Piesse St, Toodyay	(08) 9574 2435
Goomalling Caravan Park	Throssell St, Goomalling	(08) 9629 1183
Goomalling Community Resource Centre	Railway Tce, Goomalling	(08) 9629 1570
Slater Homestead	Merredin Rd, Goomalling	0400 495 173
Dowerin Shire	Cottrell St, Dowerin	(08) 9631 1202
Dowerin Community Resource Centre	Stewart St, Dowerin	(08) 9631 1662
Wyalkatchem Shire	Honour Ave, Wyalkatchem	(08) 9681 1166
Wyalkatchem Museum	Railway Tce, Wyalkatchem	0429 471 700
Trayning Shire	Railway St, Trayning	(08) 9683 1001
Trayning Post Office	Coronation St, Trayning	(08) 9683 1130
Nungarin Community Resource Centre	Railway Ave, Nungarin	(08) 9046 5400
Central Wheatbelt Visitor Centre	Barrack St, Merredin	(08) 9041 1666

Hospitals & Chemists

Toodyay Pharmacy*	Stirling Tce, Toodyay	(08) 9574 2393
Goomalling Hospital	Forrest St, Goomalling	(08) 9629 0100
Goomalling Pharmacy	Railway Tce, Goomalling	(08) 9629 1088
Wyalkatchem Hospital	Wyalkatchem Koorda Rd	(08) 9692 1222
Kunnunoppin Hospital	Leake St, Kunnunoppin	(08) 9683 2044
Merredin Hospital	Kitchener Rd, Merredin	(08) 9081 3222
Merredin Chemist	102 Barrack St, Merredin	(08) 9041 1311

Public Toilets

Toodyay*	Duidgee Park, Cnr Harper & Railway Rd	
Toodyay*	Duke St, Cnr Duke St & Charcoal Lane	
Toodyay*	Memorial Hall, Stirling Tce, Toodyay	
Toodyay*	Pelham Lookout, Duke St - South End	
Toodyay*	Railway Tce, Goomalling	
Goomalling - Train Station ▲	Stewart St, Dowerin	
Dowerin - Main St Public Toilets ▲	Cottrell St, Dowerin	
Dowerin - Town Hall*	Railway Tce, Wyalkatchem	
Wyalkatchem*	Railway St, Trayning	
Trayning - Info Bay*	Bencubbin Rd, Trayning	
Trayning – Playground	Railway Ave, Nungarin	
Nungarin Public Toilets*	Barrack St, Merredin	
Central Wheatbelt Visitor Centre*	Barrack St, Merredin	
Merredin - Apex Park*		

Service Stations/Roadhouses

Toodyay - Caltex*	Cnr Stirling Tce & Goomalling Rd	(08) 9574 2478
Toodyay - Caltex*	Cnr Stirling Tce & Harper Rd	(08) 9574 2252
Goomalling - Caltex	Throssell St, Goomalling	(08) 9622 1413

* Open 7 Days a week ▲ Open 24 Hours and 7 Days a week

Goomalling - BP Roadhouse (Auto Gas)*	81 Main St, Goomalling	(08) 9629 1245
Dowerin Roadhouse & Caratel Park*	12 Goldfields Rd, Dowerin	(08) 9631 1135
Wyalkatchem Roadhouse	Mitchell St, Wyalkatchem	(08) 9681 1310
<i>24 hr card acceptor all major cards</i>		
Nungarin General Store	Railway Tce, Nungarin	(08) 9046 5003
Merredin - BP Travel Stop▲	Great Eastern Hwy, Merredin	(08) 9041 1620
Merredin - Shell Roadhouse*	Great Eastern Hwy, Merredin	(08) 9041 1982
Merredin Caltex Service Station	Barrack St, Merredin	
Merredin -Andersons BP Roadhouse	Barrack St, Merredin	(08) 9041 2292

ACCOMMODATION

B&B, Retreats, Self Contained

Amber Spring Gardens	270 Harders Chitty Rd, Toodyay	(08) 9574 5540
Avalon Homestead	81 Julimar Rd, Toodyay	(08) 9574 5050
Black Wattle Retreat	248 Black Wattle Rd, Toodyay	(08) 9574 4086
Boshack Outback	Waterning Springs Rd, Bejoording	0408 005 628
Foxburrow Holiday Accommodation	Deepdale Rd, Toodyay	(08) 9574 5819
Harcourt St B & B	26 Harcourt St	(08) 9574 5847
Hoddywell Cottage	925 Clackline Rd, Toodyay	0419 221 212
Ipswich View Homestead B&B	45 Folewood Rd, Toodyay	(08) 9574 4038
Jacaranda Homestead	124 Nunile Rd, Toodyay	(08) 9385 8891
Julimar Cottage B & B	1650 Julimar Rd, Toodyay	(08) 9574 4664
Sacred Valley Eco Retreat	24 Smokebush Way, Toodyay	(08) 9574 4493
Talleringa B & B	135 Red Brook Circle, Morangup	(08) 9572 9393
The Limes Orchard & Farm Stay	57 Clarkson St, Toodyay	(08) 9574 4810
Mystique Maison	10-14 Forrest St, Goomalling	(08) 9629 1673
Dowerin B&B	Goomalling Rd, Dowerin	(08) 9631 1008
Henry's Hideaway	Wyalkatchem Rd Korrellocking	0488 099 053
McCorry's Hotel	McCorry Rd, Nungarin	(08) 9046 4187
Merredin Tourist Park	Great Eastern Hwy, Merredin	(08) 9041 1535
Merredin B & B	30 Bates St, Merredin	(08) 9041 4358
Abby's B & B	30 Mitchell St, Merredin	(08) 9041 3499
Merredin Heritage House	79 Todd St, Merredin	0413 004 414

Caravan Parks

Toodyay Caravan Park*+o	122 Railway Rd, Toodyay	(08) 9574 2612
Toodyay Holiday Park & Chalets*+o	Stirlingia Drive, Toodyay	(08) 9574 2534
Goomalling Caravan Park*+	Throssell St, Goomalling	(08) 9629 1183
Dowerin Roadhouse & Caratel Park*	Goldfields Rd, Dowerin	(08) 9631 1135
Minnivale Caravan Park (tree), (with sullage dump)	Minnivale via Dowerin	(08) 9631 1202
Dump Point	Stewart St, Dowerin, adjacent to public toilets	
Wyalkatchem Travellers Park Hands Dve (pets, sullage dump, (LR))	Wyalkatchem	0427 814 042
Trayning Caravan Park*+o	Bencubbin/Kellerberrin Rd, Trayning	(08) 9683 1001

* Dogs Permitted, conditions apply + Caravan Park with unit accommodation & sullage dump point o Caravan Park is suitable for large units

Nungarin Caravan Park - McCorry's Old Hotel	McCorry Rd, Nungarin	(08) 9046 5187
Nungarin Mangowine Homestead (RV)	Karomin Rd, Nungarin	(08) 9046 5149
Nungarin Shire Caravan Park	Danberrin Rd, Nungarin	(08) 9046 5006
Merredin Tourist Park*+o	Great Eastern Hwy, Merredin	(08) 9041 1535

Hotel/Motels

Freemasons Hotel/Motel	125 Stirling Tce, Toodyay	(08) 9574 2201
Victoria Hotel/Motel	116 Stirling Tce, Toodyay	(08) 9574 2206
Jennacubbine Tavern	22 Collins St, Jennacubbine	(08) 9623 2273
Goomalling Tavern	61 Railway Tce, Goomalling	(08) 9629 1110
Dowerin - Commercial Hotel	Stewart St, Dowerin	(08) 9631 1206
Dowerin Roadhouse & Caratel Park	Goldfields Rd, Dowerin	(08) 9631 1135
Wyalkatchem Hotel/Motel	Railway Tce, Wyalkatchem	(08) 9681 1210
Wyalkatchem Railway Barracks	Grace St, Wyalkatchem	0427 814 042
Trayning Hotel/Motel	Railway St, Trayning	(08) 9683 1005
Nungarin - McCorry's Old Hotel	McCorry Rd, Nungarin	(08) 9046 5187
Merredin Motel & Gumtree Restaurant	10 Gamenya Ave, Merredin	(08) 9041 1886
Merredin - Oasis Hotel	Great Eastern Hwy, Merredin	(08) 9041 1133
Merredin Olympic Motel	Great Eastern Hwy, Merredin	(08) 9041 1588
Merredin Plaza All Suites	149 Gt Eastern Hwy, Merredin	(08) 9041 1755
Merredin Northside Tavern	58 Bates St, Merredin	(08) 9041 1635

Attractions

Toodyay - Connors Mill	Stirling Tce, Toodyay	(08) 9574 2435
Toodyay - Coorinja Winery	Toodyay Road Toodyay	(08) 9574 2280
Toodyay - Duidgee Park	Harper Road Toodyay	(08) 9574 2435
Toodyay - Earth Sculptures Pottery	Francis St, Toodyay	(08) 9574 2116
Toodyay - Esslemont Estate Organic Olive Oi	Timberden Dve, Toodyay	(08) 9574 5419
Toodyay - Free Range Emu Farm Clackline Rd	Toodyay	(08) 9574 1415
Toodyay - Newcastle Gaol Museum	Clinton St, Toodyay	(08) 9574 2435
Toodyay - Oliomio Olive & Lavender Farm	Parkland Dve, Toodyay	(08) 9574 5786
Toodyay - Pelham Reserve	Duke St, Toodyay	(08) 9574 2435
Toodyay - The Cola Café Restaurant & Museum	Stirling Tce, Toodyay	(08) 9574 4407
Toodyay Miniature Railway Duidgee Park	Toodyay	(08) 9574 2435

Attractions

Goomalling Historic Town Walk	16 Throssell St, Goomalling	(08) 9629 1101
Goomalling Museum	Throssell St, Goomalling	(08) 9629 1101
Goomalling - Heritage Wall	Railway Tce, Goomalling	(08) 9629 1101
Goomalling - Oak Park Reserve	Oak Park Rd, Goomalling	(08) 9629 1101
Goomalling - Oak Park Walk Trail		
Goomalling - Slater Homestead	2.5kms east of Goomalling	0400 495 173
Dowerin Museum	Cottrell St, Dowerin	(08) 9631 1202
Dowerin Centenary Park	Goldfields Rd, Dowerin	
Namelcatchem Reserve	Dowerin	(08) 9631 1202
Dowerin - Sundial	Stewart St, Dowerin	(08) 9631 1202
Dowerin - Threatened Species Garden	Stewart St, Dowerin	
Dowerin - Tin Dog Walk Trail	Dowerin	(08) 9631 1662
Korrellocking Nature Reserve	Bookman Rd, Wyalkatchem	
Wyalkatchem - School House Museum	Gamble St, Wyalkatchem	(08) 9681 1036
Wyalkatchem CBH Agricultural Museum	Railway Tce, Wyalkatchem	(08) 9681 1129
Wyalkatchem Town Heritage Walk		
Wyalkatchem Walk - a - Wyal Nature Walk Trail		
Trayning Billycatting picnic area and walktrail	Billyacatting Rd, Kununoppin	(08) 9683 1001
Trayning - Yarragin Rock	Kidd Rd, Kununoppin	(08) 9683 1001
Eaglestone Hill	Brown South Rd, Nungarin	(08) 9046 5006
Mangowine Homestead	Karomin Rd, Nungarin	(08) 9046 5149
Nungarin McCorry's Old Hotel	McCorry Rd, Nungarin	(08) 9046 5187
Nungarin Heritage Machinery & Army Museum	Museum Rd, Nungarin	(08) 9046 5108
Nungarin Heritage Cemetery Walk	Nungarin Wyalkatchem Rd	(08) 9046 5400
Nungarin Heritage Town Walk	Memorial Hall - Railway Ave	(08) 9046 5400
Nungarin Heritage Town Walk	Memorial Hall - Railway Ave	(08) 9046 5400
Nungarin Heritage Self-Drive Tour	Railway Ave	(08) 9046 5400
Nungarin Talgamine Reserve	Talgamine Reserve Rd, Nungarin	(08) 9046 5400
Merredin - Army Hospital Site	Benson Rd, Merredin	(08) 9041 1666
Merredin Collgar Wind Farm	Bulls Head Rd, Merredin	(08) 9041 1666
Merredin - Cummins Theatre	Bates St, Merredin	(08) 9041 3295
Merredin Military Museum	Great Eastern Hwy Merredin	(08) 9041 1666
Merredin Museum	Great Eastern Hwy Merredin	(08) 9041 1666
Merredin Peak	Benson Rd Merredin	(08) 9041 1666
Merredin - No 4 Pumping Station	Great Eastern Hwy Merredin	(08) 9041 1666
Merredin - Pioneer Park	Great Eastern Hwy Merredin	(08) 9041 1666
Merredin - Tamma Parkland	South Ave Merredin	(08) 9041 1666
Merredin - Totadgin Conservation Park	Bruce Rock Rd	(08) 9041 1666

Events

March

Nungarin Wheatbelt Markets	Nungarin
<i>(1st Sunday of the Month)</i>	
Merredin Show	Merredin
Massive Car Boot Sale	Toodyay
Lions Giant Auction	Toodyay
Merredin Agricultural Show	Merredin

April

Markets, Slater Homestead	Goomalling
<i>3rd Saturday of the month</i>	
Nungarin Wheatbelt Markets	Nungarin
Massive Car Boot Sale	Toodyay

May

Toodyay Moondyne Festival	Toodyay
Markets, Slater Homestead	Goomalling
Nungarin Wheatbelt Markets	Nungarin
Massive Car Boot Sale	Toodyay

June

Markets, Slater Homestead	Goomalling
Nungarin Wheatbelt Markets	Nungarin
Fibre Festival	Toodyay
Massive Car Boot Sale	Toodyay
Earth Mother Day	

July

Markets, Slater Homestead	Goomalling
Nungarin Wheatbelt Markets	Nungarin
Massive Car Boot Sale	Toodyay

August

Act Belong Commit Avon Descent	Toodyay
Toodyay International Food Festival and Family Fun Day	
Markets, Slater Homestead	Goomalling
Nungarin Wheatbelt Markets	Nungarin
Dowerin GWN Machinery Field Days	Dowerin
Massive Car Boot Sale	Toodyay
Quit Targa West	Toodyay

September

Goomalling Art Exhibition	Goomalling
Markets, Slater Homestead	Goomalling
Nungarin Wheatbelt Markets	Nungarin
Trayning Mud-Bog & Burn-Out Day	Toodyay
Massive Car Boot Sale,	Toodyay
Avon Valley Writers Festival	Toodyay
Toodyay Picnic Races	Toodyay
Open Garden Scheme - Cartref Park	Toodyay

October

Goomalling Flyer (motor event)	Goomalling
Markets, Slater Homestead	Goomalling
Nungarin, Mangowine Concert	Nungarin
Nungarin Wheatbelt Markets	Nungarin
160th Toodyay Agricultural Show	Toodyay
Massive Car Boot Sale	Toodyay
Wyalkatchem Aglime Cricket Competition	Wyalkatchem

November

Markets, Slater Homestead,	Goomalling
Nungarin Wheatbelt Markets	Nungarin
Massive Car Boot Sale	Toodyay
Toodyay Bush Poet Weekend	Toodyay

December

Nungarin Wheatbelt Markets	Nungarin
Massive Car Boot Sale	Toodyay



RV Friendly Towns



Goomalling

Tourist/Visitor Information Centre - Caravan Park office, Throssell St, Phone: (08) 9683 1001
Ph: 08 9629 1183
Email: goshire@goomalling.wa.gov.au
www.goomalling.wa.gov.au
Casual Parking - Railway Terrace, opp tavern, adj to Railway Stn. Short Term Parking - Railway Terrace, (24hr). Long Term Parking -Oak Park Picnic Ground. Dump Point/Potable water Caravan Park, Throssell St.

Dowerin

Visitor Information - Dowerin Community Resource Centre, 13 Stewart St.
Phone: (08) 9631 1662
Casual Parking: (near retail centre) Stewart St
Short Term Parking: Self contained vehicles, Field Days site, Memorial Ave, (48hr), Field Days excluded.
Long Term Parking: Minnivale
Dump Point: Dowerin, Stewart St, adjacent to Public Toilets / Minnivale Cricket Ground, (12km)

Nungarin

Visitor Information - Nungarin Community Resource Centre, Railway Ave.
Phone: (08) 9046 5400.
Casual Parking: (near retail centre) Railway Ave
Short Term Parking: Adjacent to Dump Point Merredin-Goomalling Rd, opp. Radcliffe Park.
Long Term Parking: Mangowine Homestead, Karomin Rd, Nungarin
Phone: (08) 9046 5149, \$5 per van/per night for self contained, \$2 extra for power length of stay negotiable, vehicles under 12m only.

Trayning

Visitor Information - Shire Administration Centre, Railway St, Phone: (08) 9683 1001
Casual Parking: Railway St and Twine St, Trayning administration.
Short Term Parking: Trayning Caravan Park, Kellerberrin Rd / Bencubbin Rd & Sutherland St, unlimited parking, 8 sites avail, full facilities, \$7.50 per van/per night, unpowed, paid to Shire of Trayning Administration Centre.
Long Term Parking: Trayning Caravan Park, Kellerberrin Rd / Bencubbin Rd & Sutherland St, unlimited parking, 8 sites avail, full facilities, \$7.50 per van/per night, unpowed, paid to Shire of Trayning administration centre.
Dump Point: Trayning Caravan Park, Kellerberrin Rd / Bencubbin Rd & Sutherland St

Wyalkatchem

Visitor Information - Wyalkatchem Museum and Visitor Centre, Railway Terrace.
Phone: (08) 9681 1027
Casual Parking: (near retail centre)
Short Term Parking: Self contained RV area at Wyalkatchem Travellers Park, Hands Drv. Phone: 0427 814 042 or 0429 81 4042 (96hr)
Dump Point: Wyalkatchem Travellers Park, Hands Drv. Phone: 0427 814 042 / 0429 814 042

An RV Friendly Destination™ caters for destinations, such as a tourist attraction, homestead or country pub that is friendly towards all mobile travellers.

For further information contact:

PIONEERS' PATHWAY

Ph: 1300 736 283

Website:

www.pioneerspathway.org.au
www.wheatbelttourism.com

Toodyay Visitor Centre

Opening hours 9am - 4pm 7 Days
Ph: 08 9574 2435
Email: visitorscentre@toodyay.wa.gov.au

Goomalling Caravan Park

Ph: 08 9629 1183
Email: caravanpark@goomalling.wa.gov.au
Web: www.visitgoomalling.com.au

Dowerin Community Resource Centre

Ph: 9631 1662
Email: dowtel@wn.com.au

Wyalkatchem Shire

Ph: 08 9681 1166
Email: general@wyalkatchem.wa.gov.au

Trayning Shire

Ph: 08 9683 1001
Email: admin@trayning.wa.gov.au

Nungarin Shire

Ph: 08 90465006
Email: nungshir@wn.com.au

Nungarin Community Resource Centre

Ph: 08 9046 5400
Email: nungarinrcr@skymesh.com.au

Central Wheatbelt Visitor Centre

Opening hours 9am - 4pm 7 Days
Ph: 08 9041 1666
Email: visitor@merredin.wa.gov.au

DISCLAIMER:

The information in this publication has been provided as a general guide only. Roads are not necessarily to scale and should not be used to gauge distance or direction. Although every effort has been made to ensure the accuracy of the information contained in this publication, the Pioneers' Pathway Steering Committee and contracted suppliers expressly disclaim any liability or responsibility for the accuracy of the information contained herein.

CREDITS:

Photographic contributions courtesy of Tourism Western Australia, Zacks and contributing shires. Design + Print by Fontaine Publishing Group, www.fontaine.com.au

NEIGHBOURING AREAS

Western Australian Visitor Centre
Ph: 1300 361 351
Website: www.westernaustralia.com

Norseman

Ph: 08 9039 1071
Email: tourism@norseman.info

Kalgoorlie

Ph: 08 9021 9666
Email: visitors@kalgoorlie.com

Coolgardie

Ph: 08 9026 6090
Email: visitors.centre@coolgardie.wa.gov.au

Laverton

Ph: 08 9031 1750
Email: lavertontourist@westnet.com.au

Southern Cross

Ph: 08 9049 1001
Email: yilgam@yilgam.wa.gov.au

Wave Rock

Ph: 08 9880 5182
Email: waverockinfo@westnet.com.au

Northam

Ph: 08 96222100
Email: visitorcentre@northam.com.au

York

Ph: 08 9641 1301
Email: info@york.org

Chittering

Ph: 08 9576 1100
Email: bindinfo@iinet.net.au

Mundaring

Ph: 08 9295 0202
Email: info@mundaringtourism.com.au

Swan Valley

Ph: 08 9379 9400
Email: visitorcentre@swan.wa.gov.au

An RV Friendly Town™ is one that happily provides amenities and services for the mobile traveller.



PIONEERS' PATHWAY

Toodyay | Goomalling | Dowerin | Wyalkatchem | Trayning | Kununoppin | Nungarin | Merredin

www.PioneersPathway.org.au